

## Morning Presentations

**Singapore:** Dr. Matthias Maiwald Professor National Univ. of Singapore, and at Duke-National Univ. of Singapore Graduate Medical School in Singapore.



**Prof. Lidia Morawska,** "Airborne infection transmission & Impact on Frontline Workers" Time Mag. Top 100 Most influential persons in the World for 2021. (Australia)



**Prof. Nele Brusselaers, MD, PhD** "Evaluation of science advice during the COVID-19 pandemic in Sweden" (Sweden)



**Prof. Imogen Mitchell, MBBS, PhD** Canberra Health Services, Canberra, Australia. "Australia's experience of COVID-19 Workplace Safety"



**Prof. Laith Jamal Abu-Raddad, PhD** "Immune protection of COVID-19 vaccination and natural infection" (Qatar)



**Prof. Jeannie Cimiotti, PhD, RN** "Panel Discussion: 'The Normalization of Workarounds in Health care: An Ongoing American Crisis'"



Health Watch USA  
Kevin T. Kavanagh, MD, MS  
Board Chairman  
P.O. Box 1403  
Somerset, KY 42502

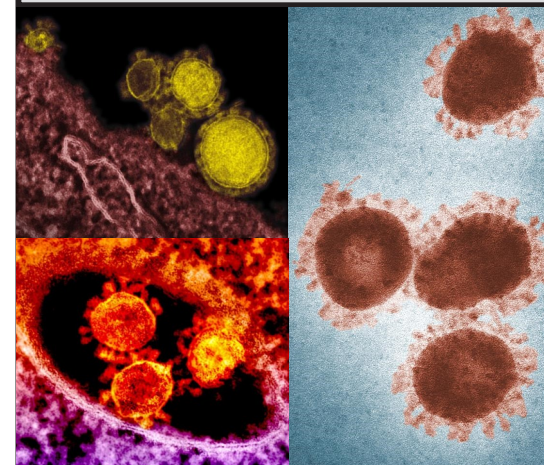
## Sponsoring Organizations

Health Watch USA<sup>sm</sup>  
Massachusetts Nurses Association  
Kentucky Rural Health Association  
Southern Kentucky AHEC  
Northeast Multistate Division  
Gardiner Consulting Group



16<sup>th</sup> Annual Conference  
COVID-19  
Frontline Worker Safety:  
A Global Perspective

Frontline Workers: A Global Perspective



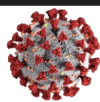
International  
Authorities From  
Around the World

Introduction by:  
Past Surgeon  
General,  
Joycelyn Elders,  
MD



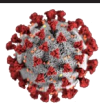
Sept. 14, 2022 Webinar  
<https://healthconference.org>

## Outcomes & Objectives



- Identify infection control strategies that prevent and mitigate the spread of COVID-19 disease among both frontline workers and patients.
- Advise retailers, schools, and others on strategies they should undertake to establish a safe workplace which protects both frontline workers and patrons.
- Identify infectious disease infrastructure deficiencies in the COVID-19 pandemic.
- Discuss cultural and socioeconomic barriers and social disparities which place socially disadvantaged populations at increased risk of infection and severe disease.
- Explain the risks of disability and death from not only acute COVID-19 but also the disabling effects of Long COVID.

## Health Watch USA<sup>sm</sup> Continuing Education

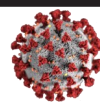


The conference has two accreditation agencies for healthcare continuing education.

- ⇒ **Northeast Multistate Division:** This activity has been submitted to the Northeast Multistate Division Education Unit for approval to award 6 contact hours. The Northeast Multistate Division Education Unit is accredited as an approver of nursing continuing professional development by the American Nurses Credentialing Center's Commission on Accreditation.
- ⇒ **Southern Kentucky AHEC:** Physician/Physician Assistant/Nurse Practitioner/Nursing Home Administrator (AMA Category I) will be provided. In addition, Respiratory Therapy (KBRC), Physical Therapy, Pharmacy, Dentistry, and Occupational Therapy credits will be applied for through the appropriate Kentucky Oversight board.

Educational credits are funded at no charge by Health Watch USA<sup>sm</sup>.

## Conference Agenda



8:40 to 8:50 AM - Introduction

8:50 am to 12:00 noon - Morning Presentations

12:40 pm to 1:00 pm - Dr. Joycelyn Elders

1:00 pm to 3:00 pm - Afternoon Presentations

3:00 pm to 4:00 pm - Panel Discussion:  
The Normalization of Workarounds in Health care: An Ongoing American Crisis.

4:00 pm to 4:15 pm—Conference Summary and Closing Remarks, Dr. Kevin Kavanagh

\* All times are Eastern Time Zone. All participants should log on 10 to 15 mins before the start of the program.

[Download Detailed Agenda](#)

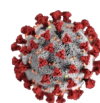
[Download Speakers' Biographies](#)

For More Info: <https://healthconference.org>

Due to unforeseen circumstances, speakers, topics and times may change without notice.

## Health Watch USA<sup>sm</sup> Conference Registration

Provided at No Charge by Health Watch USA<sup>sm</sup>



To register go to:

<https://healthconference.org>

or contact the conference coordinator, Cathy Kavanagh, at 606-425-7278.

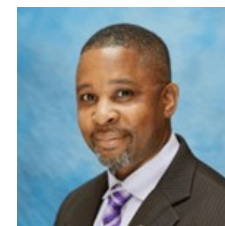


## Afternoon Presentations

**Ambassador Deborah Birx, MD**  
Presenting "COVID-19 USA - Lessons and new tools to improve workplace safety"



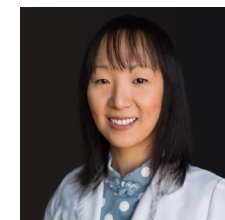
**Frazier Beatty, Ph.D., MPH**  
Presenting "Impact of Healthcare Disparities on the Frontline"



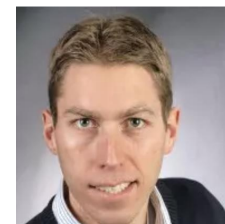
**Ziyad Al-Aly, MD** Presenting  
"An Overview of Long COVID"



**Mengyi "Zed" Zha, MD**  
Presenting "Workplace Violence Against Healthcare Workers"



**Eike Steinman, PHD**  
Presenting "Transmission and Inactivation of SARS-CoV-2" (Germany)



**Panel:** "The Normalization of Deviance :." Jeannie Cimiotti, RN PhD, Chris Pontus, MS, RN

**Kevin Kavanagh, MD, MS** Board Chairman of Health Watch USA. Intro. & Summary Remarks.